

9. Airco Ducted On/Off

Optional Static Pressure

18k: optional 10Pa & 30Pa static pressure, each unit can be installed in two ways.

10Pa: Straight Air Flow without external duct

30Pa: External duct placed on air discharge
Two installation methods by changing wiring connection.

Note: Default factory settings set to 10pa.



Front air flow,
bottom air intake

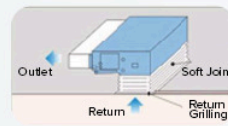


Front air flow,
back air intake

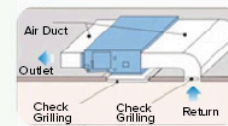
2 Ways of Air Intake

If the distance between the unit and wall is limited, you can choose the bottom air intake by tearing down the bottom board unit for ease and more flexibility.

Note: The bottom air intake is 5dB higher than the back air intake, so it's recommended to use the latter.

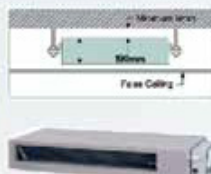


Bottom air Intake



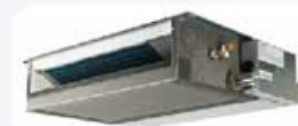
Back air Intake

Slim Design



At a height of 190mm, this unit can be installed inside low ceiling residential buildings.

Built-in Drain Pan



Built-in Drain Pan



Outside Drain Pan

Disadvantage of outside drain pan: Dust and bacteria may easily accumulate in the pan, which may cause leakage in long term use.

Airco built-in drain pan design: will be clean and durable.

Water Level Switch & Water Pump

If the water pump faces up with an issue that may cause water level to rise to a certain level, the unit will turn it off and release the water.



Water Pump is optional for duct type unit

Safety Protection

Ensure that the compressor operates in the safe range, and prevent damage caused by refrigerant leakage.



Low pressure switch High pressure switch



9. Airco Ducted On/Off



18000 Btu/h

24000 Btu/h

36000 Btu/h
48000 Btu/h
60000 Btu/h



Indoor model:		AUD-18HX4SNL	AUD-24HX4SLH	AUD-36HX4SHH	AUD-48HX4SHH	AUD-60HX4SHH
Outdoor model:		AUW-18H4SU	AUW-24H4SZ	AUW-36H6SA	AUW-48H6SP	AUW-60H6SP
Performance						
Cooling Capacity (W)		5000	7400	10200	14000	16000
Heating Capacity (W)		5500	7900	11250	15000	17500
Rated Input (w)	Cooling	1550	2450	3625	4651	5694
	Heating	1600	2190	3725	4532	5814
Air Circulation (m ³ /h)		780	1100	1800	2000	2000
EER for Cooling (w/w)		3.23	3.02	2.81	3.01	2.81
COP for Heating (w/w)		3.44	3.61	3.02	3.31	3.01
ESP (Pa)		10(30)	50(80)	50(80)	80(120)	80(120)
Power Supply						
Volt/Phase/Hz		220-240V~/1P/50Hz	220-240V~/1P/50Hz	220-240V~/1P/50Hz	220-240V~/1P/50Hz	220-240V~/1P/50Hz
Rated Current (A)	Cooling	7.1	11.5	6.7	8.8	10.0
	Heating	7.3	11.0	7.0	8.6	10.3
Noise Level (dB (A))	Indoor Unit	43/38	43/49	50/46	53/49	53/49
	High/Low					
Piping						
Diameter(Liquid)	Inch	1/4	3/8	3/8	3/8	3/8
Diameter(Gas)	Inch	1/2	5/8	5/8	3/4	3/4
Max Length	m	15	20	30	50	50
Max Height	m	7.5	10	15	15	15
Other						
Dimensions W x H x D (mm)	Indoor Unit	900 x 190 x 447	900 x 270 x 720	1300 x 350 x 800	1386 x 350 x 800	1386 x 350 x 800
Net Weight (Kg)	Indoor Unit	19	32	54	54	54
Packing Dimensions WxHxD(mm)	Indoor Unit	1070 x 236 x 580	1170 x 340 x 870	1550 x 410 x 940	1550 x 410 x 940	1550 x 410 x 940
Gross Weight (Kg)	Indoor Unit	24	37	62	62	62
Loading Capacity (20/40' /40' HC):		76/160/180	36/80/94	23/50/56	19/40/42	19/40/42

Remarks: 1. The above design and specifications are subject to change without prior notice for product improvement.
2.The values given in the table for noise level reflect the levels in anechoic chamber.

10. Airco Ducted Inverter

Optional Static Pressure

18k: optional 10Pa & 30Pa static pressure, each unit can be installed in two ways.

10Pa: Straight Air Flow without external duct

30Pa: External duct placed on air discharge
Two installation methods by changing wiring connection.

Note: Default factory settings set to 10pa.



Front air flow,
bottom air intake

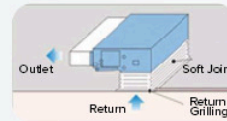


Front air flow,
back air intake

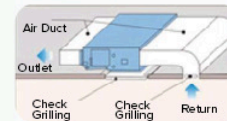
2 Ways of Air Intake

If the distance between the unit and wall is limited, you can choose the bottom air intake by tearing down the bottom board unit for ease and more flexibility.

Note: The bottom air intake is 5dB higher than the back air intake, so it's recommended to use the latter.

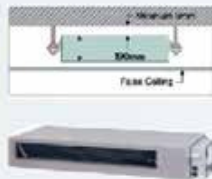


Bottom air Intake



Back air Intake

Slim Design



At a height of 190mm, this unit can be installed inside low ceiling residential buildings.

Built-in Drain Pan



Built-in Drain Pan



Outside Drain Pan

Disadvantage of outside drain pan: Dust and bacteria may easily accumulate in the pan, which may cause leakage in long term use.

Airco built-in drain pan design: will be clean and durable.

Water Level Switch & Water Pump

If the water pump faces up with an issue that may cause water level to rise to a certain level, the unit will turn it off and release the water.



Water Pump is optional for duct type unit

Safety Protection

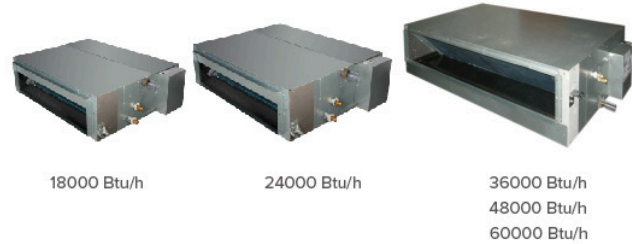
Ensure that the compressor operates in the safe range, and prevent damage caused by refrigerant leakage.



Low pressure switch High pressure switch



10. Airco Ducted Inverter



Indoor model:		AUD-18UX4SKL	AUD-24UX4SLH	AUD-36UX4SMH	AUD-48UX4SHH	AUD-60UX4SHH
Outdoor model:		AUW-18U4SG	AUW-24U4SZ	AUW-36U4SA	AUW-48U6SP	AUW-60U6SP
Performance						
Cooling Capacity (W)		5000(1900-5800)	6400(2200-7300)	10000(3600-10500)	12600(5500-1350)	17000(6200-18000)
Heating Capacity (W)		5600(1400-6600)	7250(2500-8200)	11500(3050-13800)	15000(4000-18000)	20500(6400-21000)
Rated Input (w)	Cooling	1552	1990	3110	3920	5295
	Heating	1550	2000	3190	4150	5650
Air Circulation (m ³ /h)		850	1100	1700	2000	2000
EER for Cooling (w/w)		3.22	3.22	3.22	3.21	3.21
COP for Heating (w/w)		3.61	3.63	3.61	3.61	3.63
ESP (Pa)		10(30)	50(80)	50(80)	90(120)	90(120)
Power Supply						
Volt/Phase/Hz		220-240V~/1P/50Hz	220-240V~/1P/50Hz	220-240V~/1P/50Hz	380V~/3P/50Hz	380V~/3P/50Hz
Rated Current (A)	Cooling	6.9	8.9	13.5	7.5	10.8
	Heating	6.9	8.9	13.9	8.0	11.3
Noise Level (dB (A))	Indoor Unit	39/35	40/36	43/38	46/42	46/42
	High/Low					
Piping						
Diameter(Liquid)	Inch	1/4	3/8	3/8	3/8	3/8
Diameter(Gas)	Inch	1/2	5/8	5/8	3/4	3/4
Max Length	m	20	20	30	50	50
Max Height	m	10	10	20	30	30
Other						
Dimensions W x H x D (mm)	Indoor Unit	1170 x 190 x 447	800 x 270 x 720	1300 x 266 x 720	1386 x 350 x 800	1386 x 350 x 800
Net Weight (Kg)	Indoor Unit	24	32	43	50	50
Packing Dimensions W x H x D (mm)	Indoor Unit	1338 x 264 x 578	1170 x 340 x 870	1569 x 338 x 868	1550 x 410 x 940	1550 x 410 x 940
Gross Weight (Kg)	Indoor Unit	28	37	51	58	58
Loading Capacity (20/40' /40' HC)		62/128/160	36/80/94	28/56/66	19/40/42	19/40/42

Remarks: 1. The above design and specifications are subject to change without prior notice for product improvement.
2. The values given in the table for noise level reflect the levels in anechoic chamber.

11. Airco Inverter Outdoors



Outdoor Unit:		AUW-18U4SG	AUW-24U4SG	AUW-36U4SG	AUW-48U6SP	AUW-60U6SP
Performance						
Power Supply						
Volt/Phase/Hz		220-240V~/1P/50Hz	220-240V~/1P/50Hz	220-240V~/1P/50Hz	380-415V~/3P/50Hz	380-415V~/3P/50Hz
Air Circulation (m ³ Max)		2700	3200	3500	6000	6000
Noise Level (dB (A))		56	58	58	60	60
Piping						
Diameter(Liquid)	Inch	1/4	3/8	3/8	3/8	3/8
Diameter(Gas)	Inch	1/2	5/8	5/8	3/4	3/4
Max Length	m	20	20	30	50	50
Max Height	m	10	10	20	30	30
Refrigerant Charge Volume	g	1270	1500	2100	3000	3500
Dimensions W x H x D (mm)						
Net Dimensions W x H x D (mm)	Outdoor Unit	800 x 560 x 260	900 x 640 x 300	950 x 840 x 340	950 x 1386 x 340	950 x 1386 x 340
Net Weight (Kg)	Outdoor Unit	35.5	50	70	101	108
Packing Dimensions W x H x D (mm)	Outdoor Unit	950 x 650 x 370	1060 x 700 x 410	1110 x 980 x 460	1110 x 1527 x 460	1110 x 1527 x 460
Gross Weight (Kg)	Outdoor Unit	39	56	74	107	112
Loading Capacity						
20' /40' /40HQ		11/228/304	90/186/186	52/106/106	26/53/53	26/53/53

Remarks: 1. The above design and specifications are subject to change without prior notice for product improvement.
2. The values given in the table for noise level reflect the levels in anechoic chamber.

12. Airco On/Off Outdoors

R410A



18000 Btu/h



24000 Btu/h



36000 Btu/h



48000 Btu/h
60000 Btu/h

Outdoor Unit:		AUW-18H4SU	AUW-24H4SZ	AUW-36H6SA	AUW-48H6SP	AUW-60H6SP
Performance						
Power Supply						
Volt/Phase/Hz		220-240V~/1P/50Hz	220-240V~/1P/50Hz	380-415V~/3Ph/50Hz	380-415V~/3Ph/50Hz	380-415V~/3Ph/50Hz
Rated Input (w)	Cooling	1480	2250	3300	4251	5294
	Heating	1480	1990	3400	4132	5414
Rated Current (A)	Cooling	6.8	10.3	5.5	8.0	9.3
	Heating	6.8	9.2	6.0	7.8	9.6
Air Circulation (m ³ Max)		2700	3200	3500	6000	6000
Noise Level (dB (A))		55	58	60	62	62
Piping						
Diameter(Liquid)	Inch	1/4	3/8	3/8	3/8	3/8
Diameter(Gas)	Inch	1/2	5/8	5/8	3/4	3/4
Max Length	m	15	20	30	50	50
Max Height	m	7.5	10	15	15	15
Refrigerant Charge Volume	g	1200	1650	2100	3100	3400
Dimensions: W x H x D (mm)						
Net Dimensions W x H x D (mm)	Outdoor Unit	800 x 550 x 260	900 x 640 x 300	950 x 840 x 340	950 x 1386 x 340	950 x 1386 x 340
Net Weight (Kg)	Outdoor Unit	37	54	83	114	114
Packing Dimensions W x H x D (mm)	Outdoor Unit	930 x 620 x 360	1050 x 700 x 400	1110 x 980 x 460	1110 x 1530 x 460	1110 x 1530 x 460
Gross Weight (Kg)	Outdoor Unit	40	60	91	124	124
Loading Capacity						
20' /40' /40HQ		11/228/304	90/186/186	52/106/106	26/53/53	26/53/53

Remarks: 1. The above design and specifications are subject to change without prior notice for product improvement.
2.The values given in the table for noise level reflect the levels in anechoic chamber.



0861 COOLING
www.airco.co.za

**Gauteng, Mpumalanga, Limpopo, North West,
Free State and Southern Africa:**

Airco (Pty) Ltd. Tel: +27 (0)11 493 0169
sales@airco.co.za

Western and Northern Cape:

Airco Cape Tel: +27 (0)21 551 3888
aircocapeco@airco.co.za

Kwa Zulu Natal:

Airco KZN, Tel: +27 (0)31 564 3145
saleskzn@airco.co.za